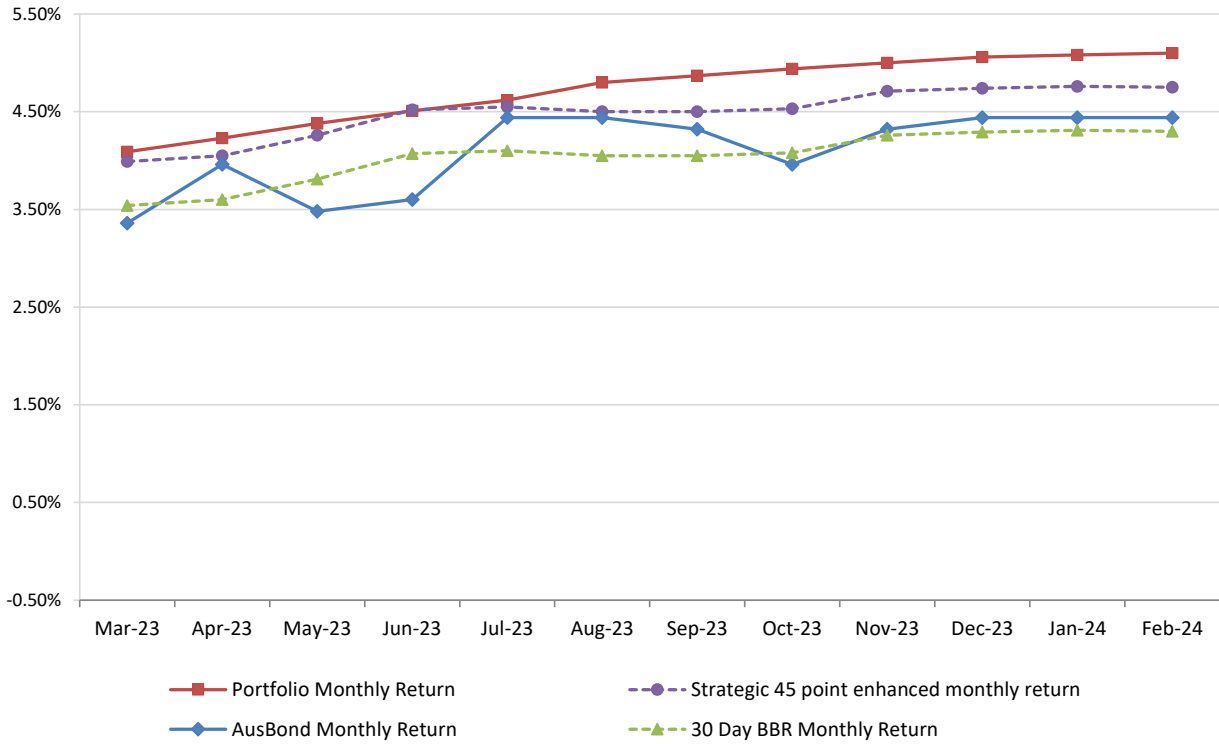


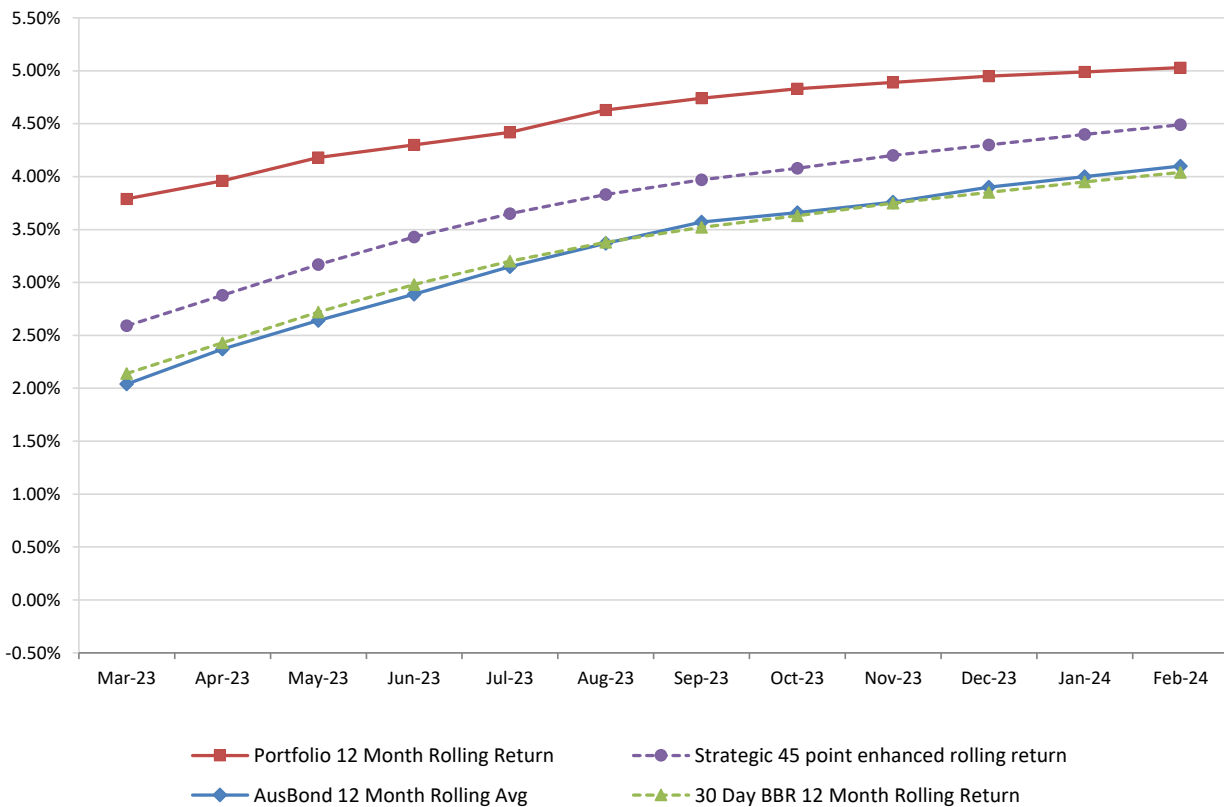
Attachment B

**Investment Performance
as at 29 February 2024**

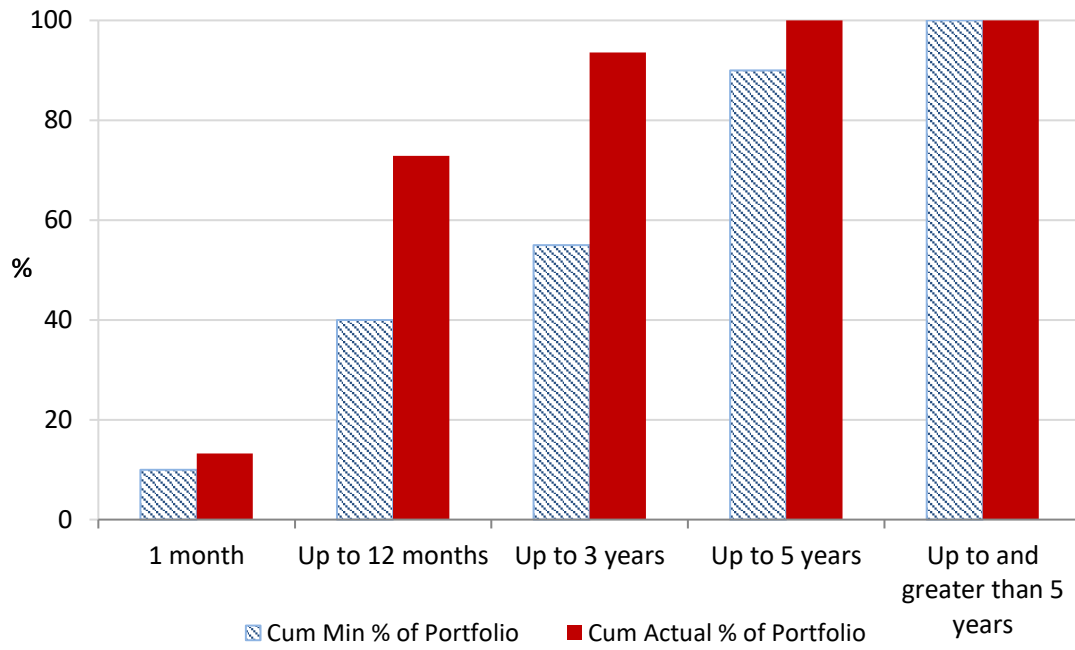
Monthly Results
Actual Portfolio vs Strategic Enhanced Benchmark vs AusBond Benchmark vs 30 Day BBR Benchmark
February 2024



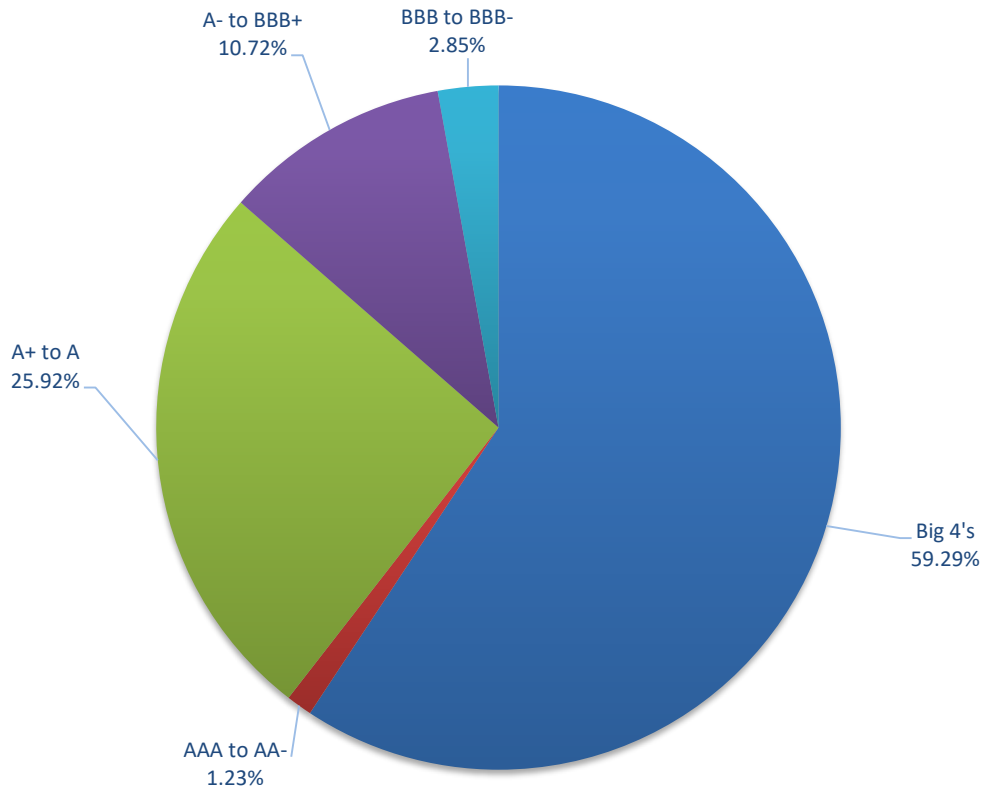
12 Month Rolling Averages
Actual Portfolio vs Strategic Enhanced Benchmark vs AusBond Benchmark vs 30 Day BBR Benchmark
February 2024



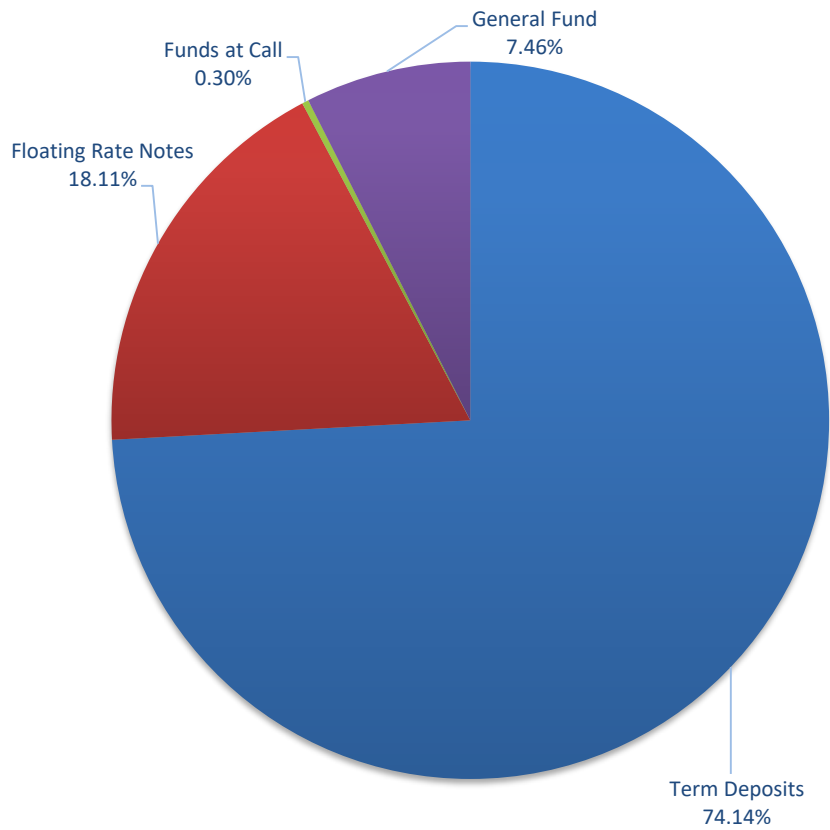
Portfolio Liquidity - Minimum Allocations as at 29 February 2024



Risk Profile as at 29 February 2024



Risk Profile as at 29 February 2024



| INVESTMENT AND CASH DISTRIBUTION BY FINANCIAL INSTITUTION | | | | |
|---------------------------------------------------------------------------------|-------------------------------------------------------|---------------|----------------------|-----------------------|
| as at 29 February 2024 | | | | |
| Institution Category | Financial Institution | Amount \$M | Financial Inst. % | Institution Cat. % |
| Australian Big 4 Bank (and related institutions) | ANZ Bank | 23.0 | 2.8 | |
| | Commonwealth Bank | 123.7 | 15.2 | |
| | National Australia Bank | 95.4 | 11.7 | |
| | Westpac Banking Corporation | 241.7 | 29.6 | |
| Big 4 Total | | 483.8 | | 59.3 |
| Other Australian ADIs and Australian subsidiaries of foreign institutions | Bank Australia Limited | 9.5 | 1.2 | |
| | Bank of Queensland | 18.0 | 2.2 | |
| | Bendigo & Adelaide Bank | 69.5 | 8.5 | |
| | Great Southern Bank (formerly Credit Union Australia) | 6.5 | 0.8 | |
| | ING Bank | 100.0 | 12.3 | |
| | Suncorp Bank | 97.5 | 11.9 | |
| | Macquarie Bank Ltd | 14.0 | 1.7 | |
| | Northern Territory Treasury Corporation | 10.0 | 1.2 | |
| Newcastle Permanent Building Society | 7.3 | 0.9 | | |
| Other ADI Total | | 332.3 | | 40.7 |
| Grand Total | | 816.1 | 100.0 | 100.0 |